

> Placas de bornes adaptables



REFER.	Largo	Ancho	Tornillo	Dist. Aguj.
P3036	36	23	M3	14 mm.
P3040	40	25	M4	17 mm.
P3050	50	32	M4	19 mm.
P3056	56	36	M5	20 mm.
P3069	70	45	M6	26 mm.
P3080	82	52	M6	31 mm.
P3095	95	60	M8	37 mm.
P3118	115	70	M10	42 mm.
P3125	125	80	M12	48 mm.
P3140	145	90	M14	57 mm.
P3170	165	100	M16	64 mm.
P3240	240	150	M18	90 mm.

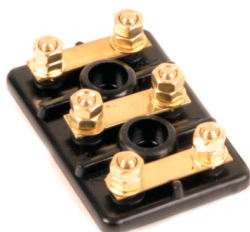
> Placas de bornes adaptables AEG

REFER.	Diámetro	Tornillo	Dist. Aguj.
P7085	85	M5	70 mm.
P7105	115	M6	95 mm.

ESTE MODELO NO INCLUYE HERRAJES NI TORNILLOS



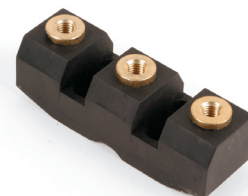
> Placas de bornes adaptables Siemens



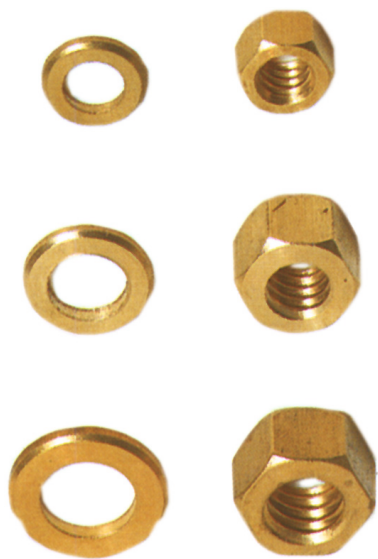
REFER.	Largo	Ancho	Tornillo	Dist. Aguj.
P1055	55	37	M4	20 mm.
P1065	65	44	M5	25 mm.
P1076	76	54	M6	28 mm.

> Regletas de bornes adaptables Siemens

REFER.	Largo	Ancho	Tornillo	Dist. Aguj.
P1106	106	34	M8	41 mm.
P1123	123	42	M10	47 mm.
P1145	145	44	M12	55 mm.
P1183	181	53	M16	69 mm.



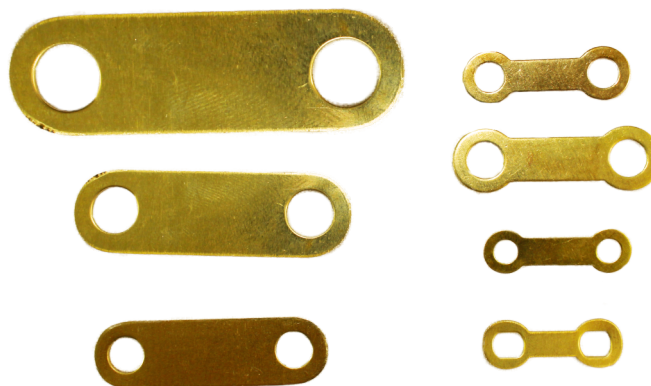
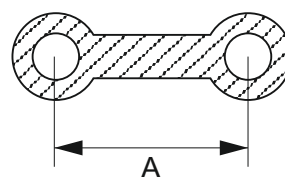
> Arandelas y tuercas latón



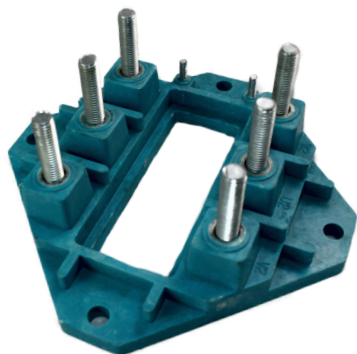
Arandela	Métrica	Tuerca	Métrica	Placa
AM-3	M3	TM-3	M3	P3036
AM-4	M4	TM-4	M4	P3040-3050
AM-5	M5	TM-5	M5	P3056
AM-6	M6	TM-6	M6	P3069-3080
AM-8	M8	TM-8	M8	P3095
AM-10	M10	TM-10	M10	P3118
AM-12	M12	TM-12	M12	P3125
AM-14	M14	TM-14	M14	P3140
AM-16	M16	TM-16	M16	P3170

> Puentes latón

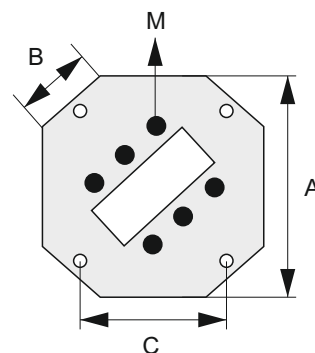
REFER.	PLACA	A
P-036	P3036	15
P-040	P3040	18
P-050	P3050	20
P-056	P3056	22
P-069	P3069	25
P-080	P3080	31
P-095	P3095	36
P-0118	P3118	45
P-0125	P3125	48
P-0140	P3140	56
P-0170	P3170	65



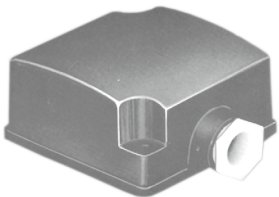
> Placas de bornes octogonales



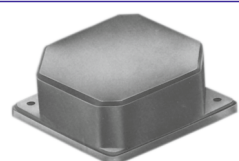
REFER.	A	B	C
T180 M6	106	25	80
T225 M8	138	35	100
T280 M10	154	30	120

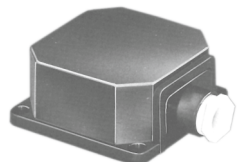


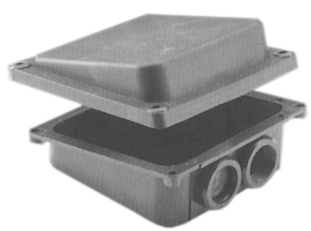
> Cajas bornes plástico

	REFER.	Interior	Diagonal
	57P	57 - 57	65
61P	63 - 63	75	
78P	78 - 78	93	

REFER.	Interior	Diagonal	
72P	71 - 71	80	
80P	80 - 80	90	

	REFER.	Interior	Diagonal
	70P	70 - 75	90
83P	83 - 83	99	

REFER.	Interior	Dist. Agujeros	
71P	72 - 72	61 - 61	
85P	87 - 87	73 - 73	

	REFER.	Interior	Dist. Agujeros
	75P	62 - 62	60 - 60
	86P	72 - 72	74 - 74
	95P	80 - 80	74 - 74
	105P	85 - 85	82 - 82