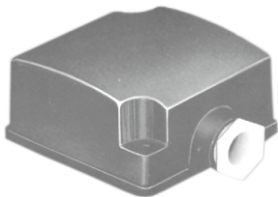
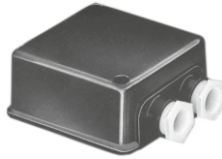
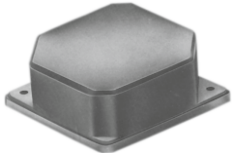
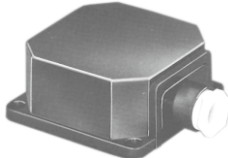



> Cajas bornes plástico

	REFER.	Interior	Diagonal
	57P	57 - 57	65
	61P	63 - 63	75
	78P	78 - 78	93

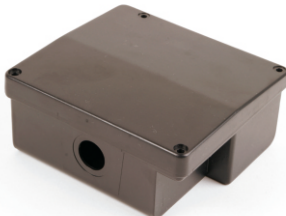
REFER.	Interior	Diagonal	
72P	71 - 71	80	
80P	80 - 80	90	

	REFER.	Interior	Diagonal
	70P	70 - 75	90
	83P	83 - 83	99

REFER.	Interior	Dist. Agujeros	
71P	72 - 72	61 - 61	
85P	87 - 87	73 - 73	

	REFER.	Interior	Dist. Agujeros
	75P	79 - 79	60 - 60
	86P	89 - 89	74 - 74
	95P	100 - 100	74 - 74
	105P	107 - 107	82 - 82

> Cajas bornes hormigonera

REFER.	Interior	Dist. Agujeros	
CBHE	120 - 130	70 - 70	
CBHS	120 - 130	70 - 70	
CBHE-05	90 - 110	50 - 50	

> Tapas y cajas bornes metálicas

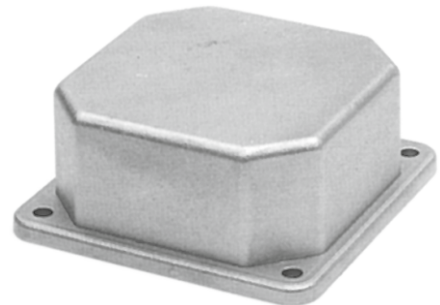


Tipo Caja



REFER.	Dist. Agujeros	Interior
ZC56-71	60 - 60	81x81x30
ZC80-112	73 - 73	95x95x38
ZC132	82-82	123x123x50
ZC160-200	125 - 125	132x132x52

REFER.	Dist. Agujeros	Interior
ZC56-71 T	63 - 63	62x62x30
ZC80-112 T	73 - 73	75x75x35
ZC-132 T	82 - 82	88x88x44



Tipo Tapa

> Dispositivos centrífugos adaptables



GEE D-G
Móvil: Eje 24



HORMIGONERA D-H
FijoØ: Ext.: 78 - Eje: 22
MovilØ: Eje 12



SIEMENS D-S
FijoØ: Ext.: 60 - Eje: 34
MovilØ: Eje 17



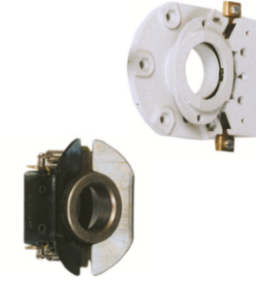
D-F55
FijoØ: Ext.: 55 - Eje: 17
MovilØ: Eje 16



D-F60 (M17 ó M20)
FijoØ: Ext.: 65 - Eje: 24
MovilØ: Eje 17 ó 20



D-F65 (M17 ó M20)
FijoØ: Ext.: 60 - Eje: 23
MovilØ: Eje 17 ó 20



D-F75
FijoØ: Ext.: 70 - Eje: 28
MovilØ: Eje 22